

SPECIFICATION

	Units	HV-60	HV-110	HV-130
TRAVEL				
X-axis Travel	mm	600	1100	1300
Y-axis Travel	mm	420	600	600
Z-axis Travel	mm	450	650	650
Distance Between Spindle Nose and Table Center	mm	170	125	125
TABLE				
Table Size	mm	700x420	1200x600	1400x600
Number of T - Size × Slots × Pitch	mm	18x3x125	18x5x100	18x5x100
Max. Loading Capacity	kg	300	1200	1200
Spindle Specification (Option)		#40 Belt Type	#40 Belt Type (#40 Direct-Drive Type) (#50 Belt Type)	#40 Belt Type (#40 Direct-Drive Type) (#50 Belt Type)
SPINDLE				
Spindle Type		#40 Belt Type	#40 Direct-Drive Type	#50 Belt Type
Spindle Speed	rpm	10000 / 12000	10000/12000/15000	8000 / 10000
Spindle Power	KW	5.5 / 7.5	7.5/11	15/18.5
3-AXES				
Rapid Feedrate X/Y/Z	m/min	42/42/42	42 / 42 / 36	36 / 36 / 30
Cutting Feedrate X/Y/Z	m/min	15/15/15	15/15/15	12/12/12
The X/Y axis Ballscrew (dia. x pitch)		32 × 16	45 × 16	45 × 16
The Z axis Ballscrew (dia. x pitch)		32 × 16	45 × 16	45 × 16
Linear Guideways Type X		30 Ball Type 4 Block	45 Roller Type 4 Block	45 Roller Type 6 Block
Linear Guideways Type Y		30 Ball Type 4 Block	45 Roller Type 4 Block	45 Roller Type 4 Block
Linear Guideways Type Z		35 Ball Type 4 Block	55 Roller Type 4 Block	55 Roller Type 4 Block
TOOL MAGAZINE				
Magazine Capacity		#40 20T	#40 30T #50 24T	#40 30T #50 24T
Tool Changer Method		Arm Type (Armless Type)	Arm Type (Armless Type)	Arm Type (Armless Type)
Max. Tool Weight	kg	7	7 15	7 15
Max. Tool Diameter (adjacent tools / without adjacent tools)	mm	75 / 150	75/150 105/210	75/150 105/210
Max. Tool Length	mm	250	250 350	250 350
Tool Change Time T to T	sec.	3	3.5 4	3.5 4
Tool Selection Method		Random	Random	Random
Controller		FANUC / MITSUBISHI		
Barometric Demand	Kg/cm ²	6	6	6
Coolant Tank Capacity	L	230	550	550
Machine Operation Dimensions (Width × Depth × Height)	mm	2450x1800x2350	2800 × 2500 × 2300	3320 × 2500 × 2300
Machine Weight	Kg	3500	8000	8900

TDSK

HV SERIES
60 / 110 / 130
CNC Vertical Machining Center



TOP DRAWER PRECISION MACHINERY CO., LTD.
Address : No. 18-8, Lane 234, Shenlin Rd., Sec. 1, Daya Dist., Taichung, Taiwan 428
Telephone : 886-4-2560-4055 (Rep.) Fax : 886-4-2560-4056
E-Mail : top-drawer@hotmail.com.tw
URL: <http://www.tdsk.com.tw>

TDSK

The Smart-Excellent M/C

- High rigidity & High precision construction can load inertia from High-gravity movement.
- Import large roller bearing runs smoothly & speedy on the linear and hard rail.
- Large span construction makes machine more stable and fast.
- Short-nose design makes high-speed machining efficiency.
- BBT spindle has better precision more on machining.
- 3-axis 48m/min high speed movement can save 50% on machining time.
- Integrated steel style of spindle head is better more.
- Humanized operation mode allows the operator more comfortable and easy to use.
- Variety options fit more on customer's need.
- Design on oil-water separating can increase the time of cutting fluid.
- Full guarding keeps the workplace more clean and people's safety.
- Large coolant tank on the rear of machine and use a large cutting fluid hopper over it.
- Working table can load 1,200 KG, good for machining moulds.
- Chip conveyor can be changed both sides. It's free space to use.
- Spindle with air blast can avoid chips when tool changing and reduce out grade product.
- Install the visual hole on the magazine cover and reduce time of NCT.
- Automatic power-off after finishing work.

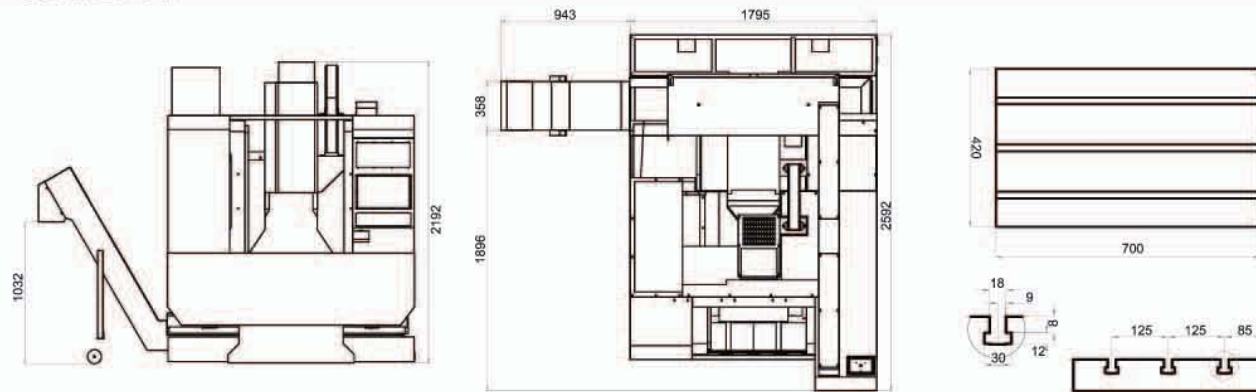
H V

SERIES 60 / 110 / 130



Dimension / Working Area

HV60 >



HV110 / 130 >

